

VORTAC MRB 112.1 Chan 58	APP CRS 290°	Rwy Idg TDZE Apt Elev	N/A N/A 565
--	------------------------	-----------------------------	--

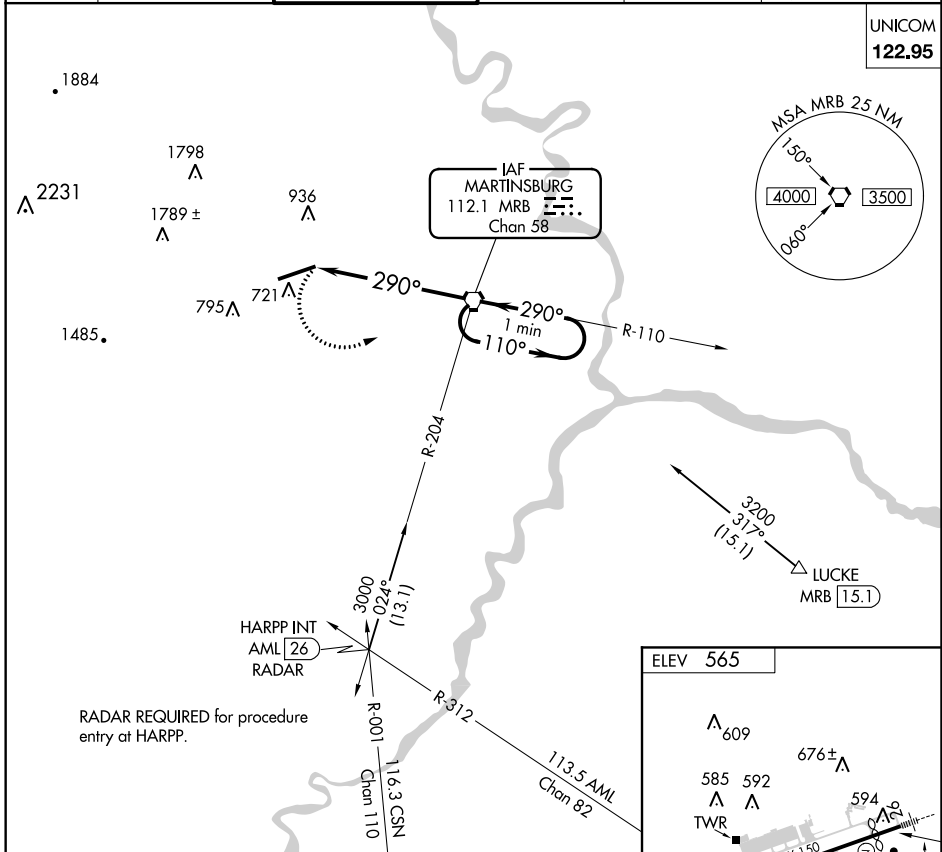
VOR-A

EASTERN WEST VIRGINIA RGNL/SHEPHERD FIELD (MRB)

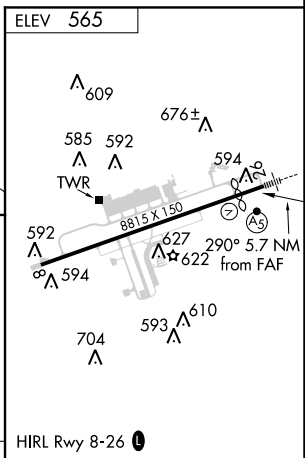
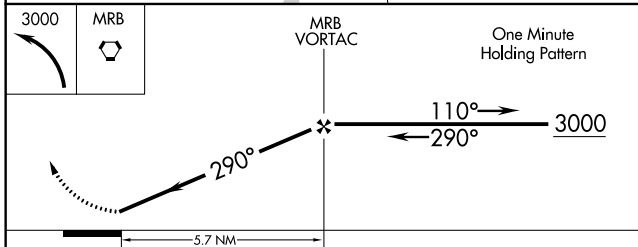
⚠ When local altimeter setting not received, use Hagerstown altimeter setting and increase all MDA 80 feet and Cat C/D visibility ¼ mile. MISSED APPROACH: Climbing left turn to 3000 direct MRB VORTAC and hold, continue climb in hold to 3000.

ASOS 119.925	POTOMAC APP CON 132.075 269.075	MARTINSBURG TOWER ★ 124.3 (CTAF) 233.7	GND CON 121.8 257.65	CLNC DEL 121.8 257.65	CLNC DEL 132.075 269.075 (When twr closed)
------------------------	---	---	--------------------------------	---------------------------------	---

UNICOM
122.95



RADAR REQUIRED for procedure entry at HARPP.



CATEGORY	FAF to MAP 5.7 NM				
	A	B	C	D	E
C CIRCLING	1080-1 515 (600-1)	1240-1 675 (700-1)	1240-2 675 (700-2)	1260-2¼ 695 (700-2¼)	2140-3 1575 (1600-3)
	Knots	60	90	120	150
	Min:Sec	5:42	3:48	2:51	2:17
				180	1:54

VOR-A

NE-4, 17 AUG 2017 to 14 SEP 2017

NE-4, 17 AUG 2017 to 14 SEP 2017