

(TRIXY5.TRIXY) 17117

TRIXY FIVE DEPARTURE

EASTERN WEST VIRGINIA RGNL/SHEPHERD FIELD (MRB)

AL-249 (FAA)

MARTINSBURG, WEST VIRGINIA

ASOS
 119.925
 CLNC DEL
 121.8 257.65
 132.075 269.075 (When Tower Closed)
 GND CON
 121.8 257.65
 MARTINSBURG TOWER*
 124.3 (CTAF) 233.7
 POTOMAC DEP CON
 126.825 239.025

**TOP ALTITUDE:
 6000**

TAKEOFF MINIMUMS

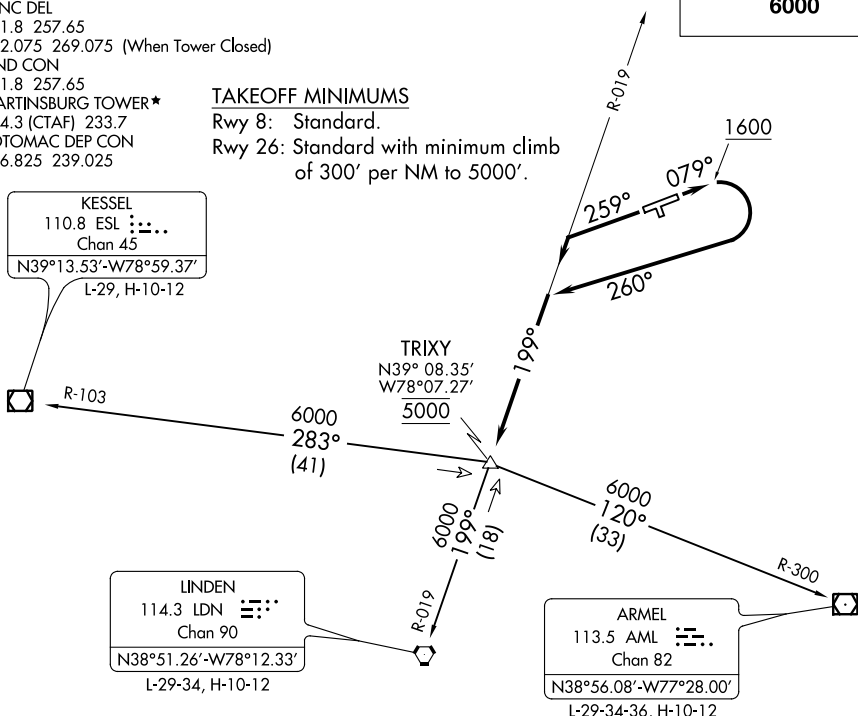
Rwy 8: Standard.
 Rwy 26: Standard with minimum climb
 of 300' per NM to 5000'.

KESSEL
 110.8 ESL
 Chan 45
 N39°13.53'-W78°59.37'
 L-29, H-10-12

TRIXY
 N39° 08.35'
 W78°07.27'
 5000

LINDEN
 114.3 LDN
 Chan 90
 N38°51.26'-W78°12.33'
 L-29-34, H-10-12

ARMEL
 113.5 AML
 Chan 82
 N38°56.08'-W77°28.00'
 L-29-34-36, H-10-12



TAKEOFF OBSTACLE NOTES

Rwy 8: Tree 704' from DER, 278' right of centerline, 587' MSL. Tree 827' from DER, 575' left of centerline, 592' MSL. Trees beginning 879' from DER, 340' right of centerline, up to 593' MSL. Trees beginning 984' from DER, 309' left of centerline, up to 594' MSL. Tree 1322' from DER, 392' right of centerline, 599' MSL. Trees beginning 1510' from DER, 553' right of centerline, up to 602' MSL. Tree 1729' from DER, 503' right of centerline, 603' MSL.
 Rwy 26: Terrain 165' from DER, 468' right of centerline, up to 569' MSL.

Note: Chart not to scale.

DEPARTURE ROUTE DESCRIPTION

TAKEOFF RUNWAY 8: Climb heading 079° to 1600, then climbing right turn heading 260° to intercept LDN VORTAC R-019 to cross TRIXY INT at 5000, then on transition or assigned route, thence

TAKEOFF RUNWAY 26: Climb heading 259° to intercept LDN VORTAC R-019 to cross TRIXY INT at 5000, then on transition or assigned route, thence
 maintain 6000, expect filed altitude/flight level ten minutes after departure.

ARMEL TRANSITION (TRIXY5.AML): From over TRIXY INT on AML R-300 to AML VOR/DME.

KESSEL TRANSITION (TRIXY5.ESL): From over TRIXY INT on ESL R-103 to ESL VOR/DME.

LINDEN TRANSITION (TRIXY5.LDN): From over TRIXY INT on LDN R-019 to LDN VORTAC.

TRIXY FIVE DEPARTURE

(TRIXY5.TRIXY) 31MAR16

MARTINSBURG, WEST VIRGINIA

EASTERN WEST VIRGINIA RGNL/SHEPHERD FIELD (MRB)

NE-4, 17 AUG 2017 to 14 SEP 2017

NE-4, 17 AUG 2017 to 14 SEP 2017