

WAAS Ch 99633 W08A	APP CRS 079°	Rwy Idg TDZE 565 Apt Elev 565	8815
--	------------------------	---	-------------

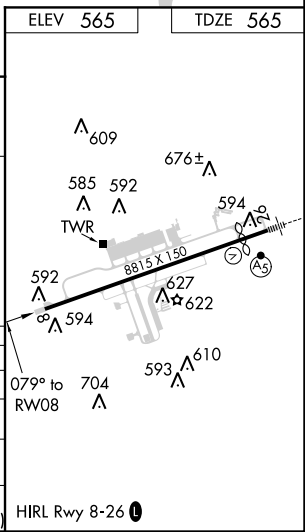
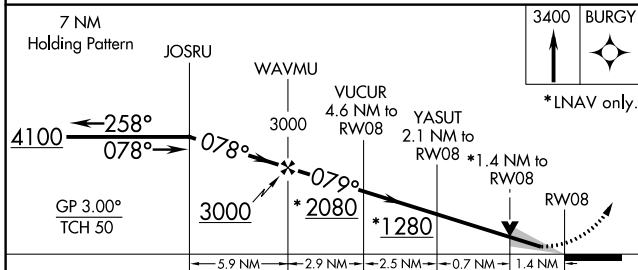
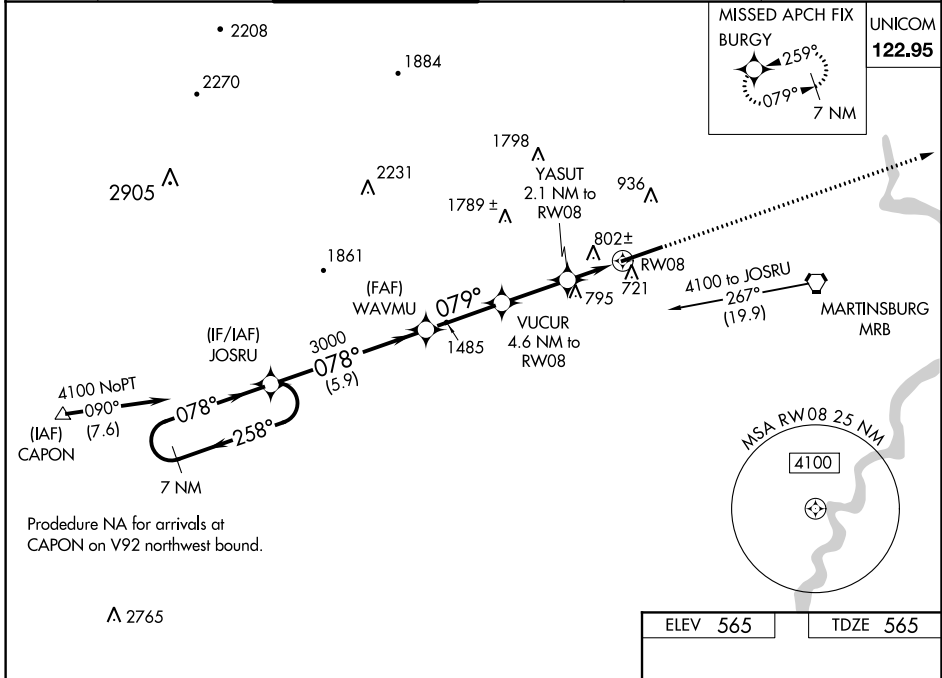
RNAV (GPS) RWY 8

EASTERN WEST VIRGINIA RGNL/SHEPHERD FIELD (MRB)

⚠ Baro-VNAV and VDP NA when using Hagerstown altimeter setting. For uncompensated Baro-VNAV systems, procedure NA below -14°C (7°F) or above 54°C (130°F). DME/DME RNP-0.3 NA. When local altimeter setting not received, use Hagerstown altimeter setting and increase all DA 70 feet and LPV and LNAV/VNAV all Cats visibility 1/8 mile, increase all MDA 80 feet and LNAV Cat C/D/E and Circling Cat C/D visibility 1/4 mile.

MISSED APPROACH:
Climb to 3400 direct BURG and hold.

ASOS 119.925	POTOMAC APP CON 132.075 269.075	MARTINSBURG TOWER * 124.3 (CTAF) 233.7	GND CON 121.8 257.65	CLNC DEL 121.8 257.65	CLNC DEL 132.075 269.075 (When twr closed)
------------------------	---	---	--------------------------------	---------------------------------	---



CATEGORY	A	B	C	D	E
LPV DA		815-3/4	250 (300-3/4)		
LNAV/DA VNAV		998-1 1/4	433 (500-1 1/4)		
LNAV MDA	1060-1	495 (500-1)	1060-1 3/8	495 (500-1 3/8)	
C CIRCLING	1060-1 495 (500-1)	1240-1 675 (700-1)	1240-2 675 (700-2)	1260-2 1/4 695 (700-2 1/4)	2140-3 1575 (1600-3)

RNAV (GPS) RWY 8

NE-4, 17 AUG 2017 to 14 SEP 2017

NE-4, 17 AUG 2017 to 14 SEP 2017